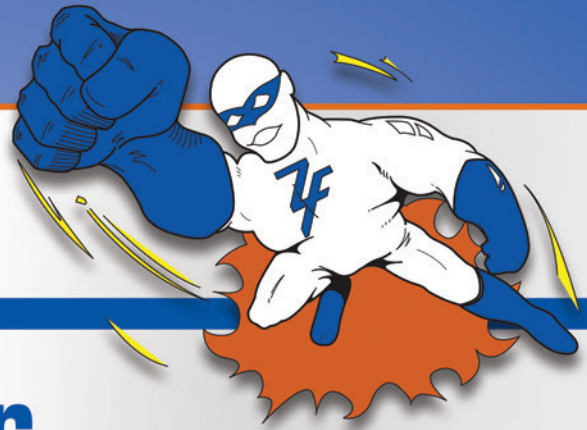


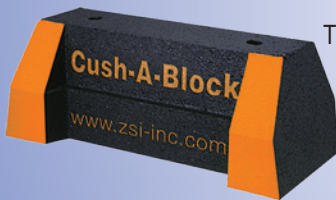


ZSi-Foster



HVAC/R INSULATED TUBING & PIPE SUPPORTS REFRIGERATION COMPONENTS

CUSH-A-BLOCK ROOFTOP SUPPORT SYSTEMS



The CBS Series is UV resistant and suitable for installation on most types of roofing material or other flat surfaces. Can be used as a curb (sleeper) replacement.

Screw fasteners can be used to attach one or two hole pipe straps or a piece of strut. Standard strut mount pipe clamps are used to secure the pipes. The CBS Series provides a longer mounting surface with strut lengths up to 46 $\frac{3}{8}$ ". Roof supports come pre-assembled.

- 100% Recycled Rubber, UV resistant
- LEED Certifiable
- Independent Laboratory Tested to the following
 - ASTM D575 Method B – Modified, Compression/Deflection
 - ASTM D1171 Modified – Ozone Resistance
 - Freeze/Thaw Environmental Simulation
- Resistance to Freeze and Thaw
- All 4 Corners coated with reflective safety orange for visibility
- Compatible with most rooftop materials

Cush-A-Block support applications:

- Solar Racking
- Pipe & Conduit supports
- HVAC, Duct, Cable Tray supports
- Air Conditioning supports
- Roof Walkway supports



The channel for Cush-A-Block support assemblies includes a variety of options. The strut can be made in special lengths, finishes, and alloys including Aluminum, Stainless Steel both 304 & 316, PVC coated, Powder coated, Zinc Trivalent Chromium, Pre-Galvanized and Hot Dipped Galvanized.

www.zsi-foster.com

**CUSH-A-NATOR®**

The **Cush-A-Nator®** cushion is manufactured in the United States and made from a new incredibly durable thermoplastic rubber that resists high heat and provides longer life against vibration fatigue. The Cush-A-Nator® is made from a proprietary thermoplastic vulcanized material cross-linked with high performance rubber and thermoplastic

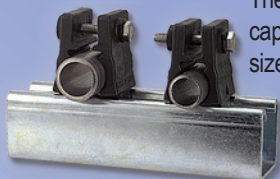
elastomers, which produces the highest operating temperature range in the industry.

- The Cush-A-Nator is designed & manufactured in Michigan.

The Cush-A-Nator "Cool Blue" has a temp range of -65°F to 340°F



The Cush-A-Nator standard has a temp range of -50°F to 275°F

**CUSH-A-GRIP**

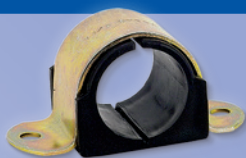
The **Cush-A-Grip** has multi-size adjustment capability allows four clamp sizes to fit fifteen sizes of tube and pipe. Comes complete with stainless steel bolt and captured nylon lock nut hardware. It is multi-environmental and can cover a wide range of applications and maintain thermal barrier.

- Ten sizes of tube, five sizes of pipe
- Temperature range: -40°F to +380°F
- No galvanic reaction, Will not rust, permissible outdoors
- Diameters from .25" to 1.31" (6mm to 32mm)

**OMEGA SERIES™**

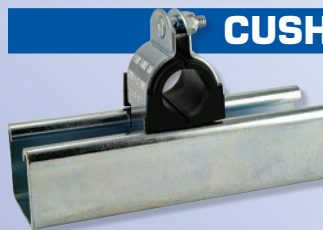
Omega Series™ – The Omega Series™ clamp assembly retains, guides, protects line runs. Attached with two standard fasteners to any flat surface, the clamp eliminates the use of special channels, providing a savings in both space & cost.

- Temp Range: -50° to 275° F
- Interlock edge ensures it remains in place.

**CAL-CLAMP INSULATION**

The **Cal-Clamp** is a crush-resistant insulation clamp. Works equally well on both hot and cold lines. Asbestos Free Calcium Silicate, treated for water resistance, encased in a 360° Metal jacket

- Minimum 140 PSI compressive strength
- Working Temperature is 42° to 1200° F
- The Model CWP is for applications requiring a wet lag insulation.

**CUSH-A-CLAMP®**

Cush-A-Clamp® – Channel mounted clamping systems are ideal for multiple line runs, while absorbing shock and vibration, reducing unwanted noise and

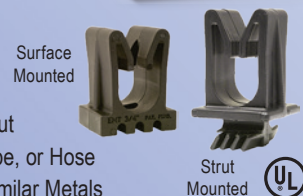
preventing galvanic corrosion. Cush-A-Clamp® fits any standard 1-5/8" channel. Steel clamps for tube sizes up to 1-3/8" have the "**Controlled Squeeze™**" design which eliminates over-tightening.

- Temp Range: -50° to 275° F
- A patented "Living Hinge" allows the cushion to be spread apart for quick, easy installation on sizes from 1/4" through 1-3/4".
- Withstand the effects of most oils, chemicals & industrial cleaning compounds

**CUSH-A-CLAW™**

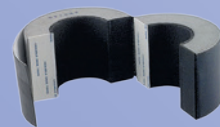
The **Cush-A-Claw™** Grabs your Tube, Pipe, or Hose and holds it in place. The unique one piece patent pending design allows for quick, and simple installation. It will not rust because it's molded from the same TPE Material of some that you've come to know and trust.

- Temp Range: -50° to 275° F
- Non Conducting, Will not Rust
- Sure Grip Base easily rotates into strut
- Easy Snap-in Installation of Tube, Pipe, or Hose
- Prevents Galvanic Corrosion of Dissimilar Metals

**CUSH-A-THERM™**

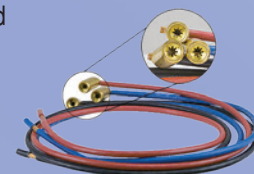
The **Cush-A-Therm™** Clamp is a fast easy way to provide a crush-resistant airtight seal for chilled refrigeration or mechanical pipe- lines that require continuous insulation. The rigid frame construction has an insulating tape inner lining which supports tube and absorbs vibration of operating pipelines. The outer cover consists of a special rubber coating which seals the cushion completely after installation in order to prevent condensation.

- Temperature range: -70°F to +250°F
- Maintains thermal barrier protection
- Prevents condensation

**GATOR-LOK**

Our patented design was made to be one-of-a-kind with not 1 but 2 layers of "Lok"ing technology. Constructed with 10 gauge, 30 inch copper-wire leads.

- Two layers of "Lok"ing technology
- Easily replaces damaged wire leads
- Installs in under five minutes





AIRSTRIP™ INSULATION



The **AIRSTRIP™** is designed to dampen the noise and vibration that can occur between piping or duct work and the supporting channel. Made from

64 Durometer Santoprene, the AIRSTRIP™ is light weight, dependable, and long-lasting.



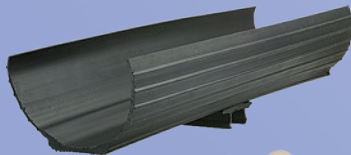
CUSH-A-STRIP™ INSULATION



Cush-A-Strip™ is manufactured from a thermoplastic elastomer. Cush-A-Strip is packaged in 20 foot rolls in an E-Z dispenser box for convenience in handling and storage. The special locking lip edges ensure that Cush-A-Strip™ will remain in place with a balanced grip.

SNAP-A-SADDLE™

The **SNAP-A-SADDLE™** provides an easy way to attach insulated pipes to support channel, with one step, tool-free installation.



- Temp Range: -50° to 275°F
- Available in both black & white
- UL94-HB1 Rated TPV Material
- Made in USA
- Easy Installation
- Standard 12" lengths.



SADDLE-UP

The **Saddle-Up** Pipe Insulation Saddle is a formed metal shield designed to allow insulated refrigeration pipe or tubing to pass through the support without need to compromise the vapor barrier and protects from crushing or damage at hanger and support locations.



QUICK-CLIP



Quick-Clip's unique one-piece, strong and lightweight composite polyamide alloy design is tested from -40°F to +275°F. The clip can be installed single-handedly, for fast, easy installation that saves time and money. It will overcome the problems of using cable ties for piping, electrical, optical and network cabling.

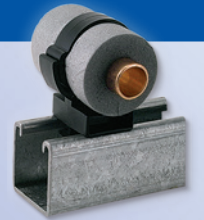
ALPHA SERIES™

Alpha Series™ – Designed for the tough jobs, the U-Bolt Assembly secures pipe runs to any flat surface. The cushion designed provides total load distribution, allowing the U-Bolt to become a full contact hanger, eliminating knife-edge loading. The U-Bolt traps and secures the cushion in place to prevent lateral movement, while nylon insert locknuts provide a positive lock.



CUSH-A-CLICK

The **Cush-A-Click** is ideal for the installation of refrigeration systems allowing the barrier seal to run the length of the pipe work without cutting the insulation material. It helps retain an unbroken vapor barrier seal, eliminating the problem of sweating on metal fittings.



CUSH-A-CLIP™

The **Cush-A-Clip™** is a simple, economical, lightweight hanger for supporting tubing. The one piece design makes installation a snap with no nuts to tighten or parts to lose. Secure but non-tightening design allows for expansion, greatly reducing joint fractures



LOOP CLAMPS

Clamps that can be slipped over a tube or wire and closed with a bolt at assembly. Holes provide easy alignment. E.P.D.M. cushion for electrical insulation and vibration absorption. The steel clamps are zinc electroplated for corrosion resistance



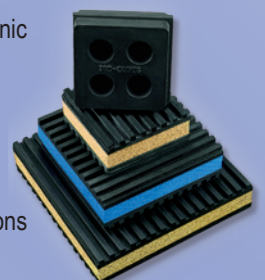
CUSH-A-RING

The **Cush-A-Ring** is a unique rubber lined hanger for copper and steel tube or pipe. The 2-1/2" thru 4" sizes are a two-part clamp that has a hinged side with a single screw patented locking system. The quick locking system is easy to close which makes it faster for installation. The noise insulating rubber lining is made of UV-resistant EPDM rubber. The Cush-A-Ring is zinc plated for corrosion resistance.



GAMMA PADS

The effects of vibration, shock, surge, galvanic corrosion and unwanted noise are a major concern. Improperly cushioned equipment, pipe, tube, or hose invites failure and potential problems. New developments in cushioned clamping and vibration isolation products from ZSI provide the proper solutions to combat these effects.

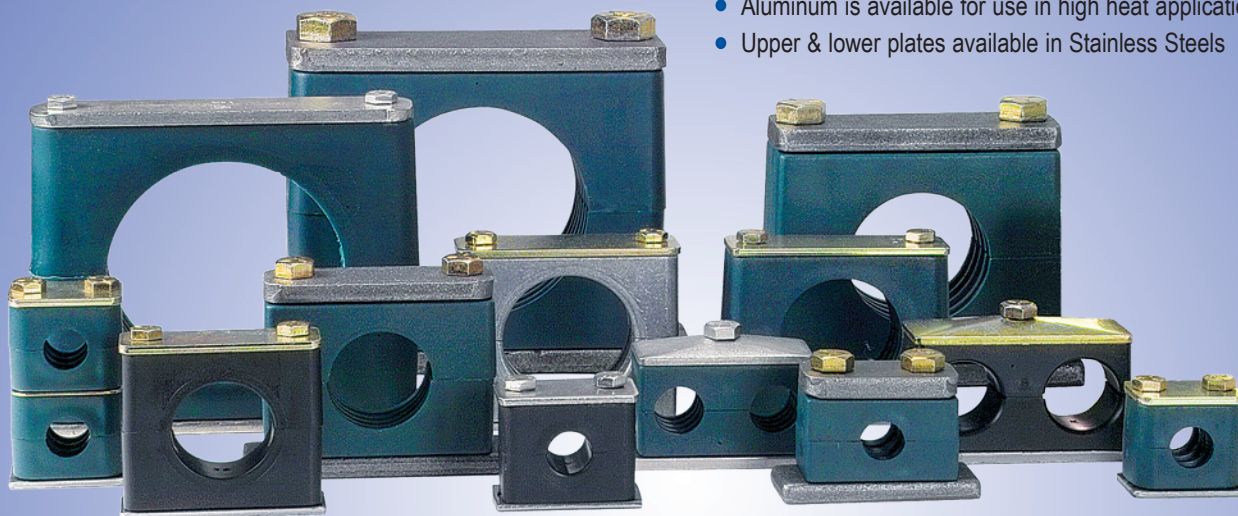




BETA CLAMPS

Beta Clamps are ideal for clamping pipe, tube, hose, and electric cables. They are an economical and easy way of securing them in all types of terrestrial, marine, O.E.M. and Industrial applications. Beta Clamps are used in all areas of industrial, mobile and marine hydraulics, general industrial pipe construction, the field of press technology, instrumentation and control technology and many more.

- Beta Clamps offer shock-absorption, vibration dampening and noise reducing properties.
- Using weldable plates, it's easy to anchor the clamps to machinery and steel work.
- Ribs in clamp bore are designed to absorb shock and vibration in the direction of the tube axis.
- Clamp Body Standard – Polypropylene (Green Color) -22°F to 194°F
- Aluminum is available for use in high heat applications
- Upper & lower plates available in Stainless Steels



FULL LINE OF QUICK DISCONNECTS

ZSi offers quick detachable couplers, hose fittings, blow guns and related accessories for use with various gasses and liquids. The most common applications for our products are for compressed air, hydraulic oil, and water. Other media are often used with our products when they are determined to be compatible with our specific materials of construction



DISTRIBUTED BY:



ZSi, INC.

45065 Michigan Ave.
Canton, MI 48188
Tel: (734) 844-0055
Tel: (800) 323-7053
Fax: (734) 844-0066