

Comfort-Care[®]



**The Leader in Heating
& Cooling Comfort**

www.marsdelivers.com



**Residential
AC/HP**



**Manufactured
Housing**



**Geothermal/
Watersource**



**Residential
Gas/Oil Furnaces**



**Room Air
Products**

MARS[®]
Delivering Confidence

TABLE OF CONTENTS

This guide shows the full range of Comfort-Aire® products for residential and commercial use. For more details on specific products, see our web site, www.marsdelivers.com, or talk to your Comfort-Aire® representative.

Condensers1

Horizontal Discharge Condensers2

Heat Pumps3

Air Handlers 3-5

Cased and Uncased Coils4

Gas Furnaces 6-7

Oil Furnaces8

Residential Package Units 9-10

Manufactured Housing.... 10-11

Ductless Mini-Splits 11-14

Infrared Heaters.....14

Room Air Products..... 15-17

Geothermal and Water-Source..... 18-21



This interactive site is the repository for all self-directed training courses, allowing distributors, dealers, installers and sales personnel to learn about a wide range of topics via an easy-to-use platform that's available at the user's convenience.

www.marsdelivers.com



All cooling products in this catalog are charged with or compatible with environmentally friendly R-410A except as noted in description.

All product voltages are single phase except as noted in description.

Due to ongoing product improvements, specifications and dimensions are subject to change and correction without notice or incurring obligations. Determining the application and suitability for use of any product is the responsibility of the installer. Additionally, the installer is responsible for verifying dimensional data on the actual product prior to beginning any installation preparations.

Third party incentive and rebate programs have precise requirements as to product performance and certification. All products meet applicable regulations in effect on date of manufacture; however, certifications are not necessarily granted for the life of a product. Therefore, it is the responsibility of the applicant to determine whether a specific model qualifies for these incentive/ rebate programs.



SPLIT SYSTEM COOLING

RSG16 Condensing Units 16 SEER 2 Stage

16 SEER Model	Cooling Nom. BTUH	Dimensions (in.) W x D x H
RSG1624S1M	24,000	26.75 x 24.75 x 29.75
RSG1636S1M	36,000	31.25 x 29.375 x 29.75
RSG1648S1M	48,000	31.25 x 29.375 x 37.75
RSG1660S1M	60,000	31.25 x 29.375 x 43.75

AHRI matched to CCG/MCG/VCG coils; also to HCG**M, HCG**P, HMG**M, HMG**P and certain gas furnaces.

See www.ahridirectory.org for all matches.

Condensing coils are efficient and durable with a copper tube/aluminum fin coil. Heavy duty two stage scroll compressor adds efficiency and long life. Cabinet is steel with durable polyester urethane finish and heavy duty top grille assembly. Features full metal jacket, quiet operation, and waterproof control box. Can be mounted on a slab or rooftop.



208/230V-1-60

2 to 5 Tons

RSG16 Condensing Units 16 SEER Single Stage

16 SEER Model	Cooling Nom. BTUH	Dimensions (in.) W x D x H
RSG1618S1P	18,000	24.25 x 24.25 x 29
RSG1624S1P	24,000	28.25 x 28.25 x 29
RSG1630S1P	29,400	28.25 x 28.25 x 37
RSG1636S1P	35,000	28.25 x 28.25 x 29
RSG1641S1P	38,000	28.25 x 28.25 x 37
RSG1647S1P	46,500	32.25 x 32.25 x 33

AHRI matched to CCG/MCG/VCG coils; also to HCG**M, HCG**P, HMG**M, HMG**P and certain gas furnaces.

See www.ahridirectory.org for all matches.



Condensing coils are efficient and highly corrosion resistant with a aluminum tube/aluminum fin coil. Cabinet is steel with durable polyester urethane finish and heavy duty top grille assembly. Features full metal jacket, quiet operation, and waterproof control box. Can be mounted on a slab or rooftop.

208/230V-1-60

1-1/2 to 5 Tons

RSG Condensing Units 14 SEER Minimum

Scroll compressor for efficiency and long life. Features full metal jacket to protect the coil, quiet operation, easy access control box and aluminum tube/aluminum coils. PSC motor is permanently lubricated, needs no maintenance. SEER ratings/capacities vary based on air handler or coil used.



14 SEER Model	Nom. BTUH	W x D x H (in.)
RSG1418S1P	18,000	24.25 x 24.25 x 29
RSG1424S1P	24,000	24.25 x 24.25 x 29
RSG1430S1P	30,000	28.25 x 28.25 x 37
RSG1436S1P	36,000	28.25 x 28.25 x 29
RSG1442S1P	42,000	28.25 x 28.25 x 33
RSG1448S1P	48,000	28.25 x 28.25 x 33
RSG1460S1P	60,000	32.25 x 32.25 x 37

AHRI matched to CCG/MCG/VCG coils; also, HMG**F1P, HMG**X1P, HCG**V1P air handlers and gas furnaces.

See www.ahridirectory.org for all matches.

208/230V-1-60

1-1/2 to 5 Tons

RSG Condensing Units

13 SEER

Scroll compressor for efficiency and long life. Features full metal jacket to protect the coil, quiet operation, easy access control box and all copper/aluminum coils. PSC motor is permanently lubricated, needs no maintenance. SEER ratings/capacities vary based on air handler or coil used.



13 SEER Model	Nom. BTUH	W x D x H (in.)
RSG1318S1M	18,000	24.25 x 24.25 x 25
RSG1324S1M	24,000	24.25 x 24.25 x 25
RSG1330S1M	30,000	24.25 x 24.25 x 29
RSG1336S1M	36,000	24.25 x 24.25 x 29
RSG1342S1M	42,000	28.25 x 28.25 x 29
RSG1348S1M	48,000	28.25 x 28.25 x 33
RSG1360S1M	60,000	28.25 x 28.25 x 29

AHRI matched to CCG/MCG/VCG coils and our air handlers.

See www.ahridirectory.org for all matches.

208/230V-1-60

1-1/2 to 5 Tons

CMA Horizontal Discharge Condenser 14 SEER

Horizontal discharge condenser is compact in size with an alternative footprint to fit in tight spaces without detracting from landscaping and outdoor living areas, which makes it great for apartment complexes and condominiums.

Features

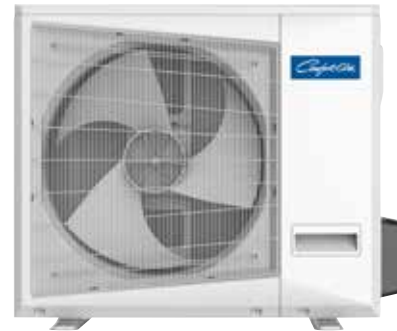
- Ultra quiet operation is rated as low as 54 decibels
- Attractive cabinet is galvanized steel with powder coated finish for durability, in attractive neutral color
- Low voltage 24V control system for universal use

0=115-1-60, 1=208/230V-1-60

1 to 4 Tons

14 SEER Model	Nom. BTUH	Dimensions (in.) H x W x D
CMA1412SG-0	12,000	33.3 x 22.05 x 13.18
CMA1418SG-1	18,000	36.8 x 27.64 x 15.08
CMA1424SG-1	24,000	40.63 x 31.89 x 17.52
CMA1430SG-1	30,000	40.63 x 31.89 x 17.52
CMA1436SG-1	36,000	40.63 x 31.89 x 17.52
CMA1448SG-1	48,000	43.31 x 34.20 x 20.79

Comfort-Cire®



CMA14-Series Horizontal Discharge models are up to 30% less expensive than traditional 14 SEER top-discharge units.



Mars University

This interactive site is the repository for all self-directed training courses, allowing distributors, dealers, installers and sales personnel to learn about a wide range of topics via an easy-to-use platform that's available at the user's convenience.

www.marsdelivers.com

SPLIT SYSTEM HEATING

HRG16 Heat Pumps

16 SEER

16 SEER Model	BTUH Cooling*	BTUH Heating*	HSPF
HRG1624S1M	24,000	24,000	8.5
HRG1636S1M	35,000	36,000	8.5
HRG1648S1M	47,000	46,000	8.5
HRG1660S1M	59,000	59,000	8.5

*Capacities shown with HCG**V1M air handlers.

Copper tube/aluminum fin coil are designed for maximum heat transfer. Copeland scroll compressor has two stages of heating/cooling capacities for optimal comfort. Cabinet is steel with durable poly urethane finish and heavy duty top grille assembly. Full metal jacket protects the coil. Demand defrost saves energy in heating mode by defrosting only when necessary. The control box is waterproof.



208/230V-1-60

2 to 5 Tons

HRG14 Heat Pumps

14 SEER

14-15 SEER Model	BTUH Cooling	BTUH Heating	HSPF
HRG1418S1P	18,000	17,000	8.2
HRG1424S1P	23,400	21,600	8.2
HRG1430S1P	28,000	26,000	8.2
HRG1436S1P	34,000	33,800	8.2
HRG1442S1P	41,000	40,000	8.2
HRG1448S1P	47,000	46,000	8.2
HRG1460S1P	57,000	55,000	8.2

Capacities shown with HMG**F air handlers.

High efficiency heat pumps available in 14 SEER models. Built with scroll compressors for efficiency and reliability. Aluminum/aluminum coils on 14 SEER models are corrosion resistant. Time/temperature defrost. PSC motor is permanently lubricated. Full metal jacket is made of galvanized steel with polyester urethane coating for durability, corrosion resistance.



208/230V-1-60

1-1/2 to 5 Tons

HCG Variable Speed Air Handler

Model	Cap. Tons	Nominal CFM
HCG24V1P	1.5, 2.0	600
HCG36V1P	2.0	800
	2.5	1,100
	3.0	1,200
HCG42V1P	3.0	1,200
	3.5	1,400
HCG48V1P	4.0	1,600
HCG60V1P	5.0	2,000

High efficiency ECM blower motor. Multi-position (upflow or horizontal). A-coil is coated for corrosion protection. Advanced circuit board incorporates time delay relay, low voltage terminal strip and heater sequencing. Cabinet has polyester urethane finish, blower cabinet is insulated. Optional plug-in electric heater kits are available in 5 to 20 kW.



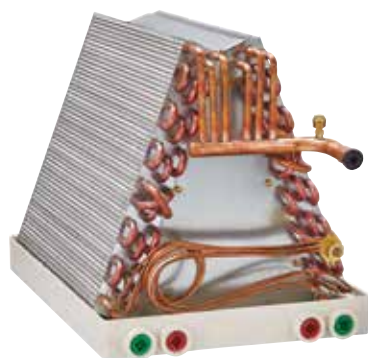
RSG13- models rated at 13.5 to 14 SEER.
RSG14- and HRG14- models rated at 14 to 16 SEER.
RSG16- and HRG16- models rated at 14.5 to 16 SEER.

208/240V-1-60

2 to 5 Tons

Cased and Uncased Coils for Split System Installations

For use with split system air conditioners and heat pumps. Right or left hand connections offer installation flexibility. Drain pan is non-corrosive. Cased coil cabinet is insulated for quiet operation. Coils feature rifled copper tubing with aluminum fins.



1-1/2 to 5 Ton



CCG Series—Uncased coils

MCG Series—Cased, multi-position

See AHRIdirectory.org for matches

HMG Air Handlers

Multi-position—upflow, downflow (F1P models only), horizontal or vertical—air handlers are available in three varieties. Each features optional plug-in electric heater kits available in 5 to 20 kW. Aluminum/aluminum A-coil for efficiency. Durable cabinet has polyester urethane finish, and blower cabinet is insulated.



HMGX1P**—TXV metering valve and fixed torque ECM blower motor, each for heating and cooling, that can be set in the field to match the application.

HMGF1P**—Permanently lubricated PSC drive, multi-speed for application flexibility.

1-1/2 to 5 Tons

HMG Air Handler with TXV & Fixed Torque Blower Motor

Model	Cap. Tons	Nominal CFM
HMG24X1P	1.5, 2.0	600 - 800
HMG30X1P	2.0	800
	2.5	1,100
HMG36X1P	3.0	1,200
HMG42X1P	3.5	1,400
HMG48X1P	4.0	1,600
HMG60X1P	5.0	2,000

HMG Air Handler with PSC Drive

Model	Cap. Tons	Nominal CFM
HMG24F1P	1.5, 2.0	600 - 800
HMG30F1P	2.5	1,100
HMG36F1P	3.0	1,200
HMG42F1P	3.5	1,400
HMG48F1P	4.0	1,600
HMG60F1P	5.0	2,000

Comfort-Cire®

BCW1 Wall Mount Air Handlers



Low 30" height all models. Air filter included with every air handler; no tools required for change out. Approved for installation in manufactured housing and mobile homes.

Order Cat. #	Model	Matching Condenser	Matching HP
1.901196	BCW1C1805NA4X-1	RSG1318S1P	HRG1418S1P
1.901197	BCW1C2405NA4X-1	RSG1324S1P	HRG1424S1P
1.901198	BCW1C2407NA4X-1	RSG1324S1P	HRG1424S1P
1.901199	BCW1C3005NA4X-1	RSG1330S1P	HRG1424S1P
1.901200	BCW1C3007NA4X-1	RSG1330S1P	HRG1424S1P
1.901203	BCW1E3607NA4X-1	RSG1336S1P	-
1.901204	BCW1E3610NA4X-1	RSG1336S1P	-
1.901196	BCW1C1805NA4X-1	RSG1418S1P	-
1.901197	BCW1C2405NA4X-1	RSG1424S1P	-
1.901198	BCW1C2407NA4X-1	RSG1424S1P	-
1.901199	BCW1C3005NA4X-1	RSG1430S1P	-
1.901200	BCW1C3007NA4X-1	RSG1430S1P	-
1.901203	BCW1E3607NA4X-1	RSG1436S1P	HRG1430S1P
1.901204	BCW1E3610NA4X-1	RSG1436S1P	HRG1430S1P

Hydronic Air Handlers for Boiler Loops

Model	Nom. Cooling Cap. Tons	Heating Cap. BTUH @ 3.5 GPM*	
		120° F EWT	180° F EWT
HWCG23X0A†	1.5 - 2.0	20,200	45,400
HWCG24X0A	1.5 - 2.0	21,600	59,300
HWCG30X0A	2.5	28,700	65,500
HWCG35X0A†	2.5 - 3.0	33,185	72,180
HWCG42X0A	3.0 - 3.5	37,800	86,300
HWCG47X0A†	3.5 - 4.0	48,200	98,640
HWCG48X0A	4.0	44,400	101,300
HWCG60X0A	5.0	46,600	106,400
HWCG23T0A†	1.5 - 2.0	20,200	45,400
HWCG24T0A	1.5 - 2.0	21,600	48,400
HWCG35T0A†	2.5 - 3.0	33,185	72,180
HWCG36T0A	2.5 - 3.0	29,800	67,300
HWCG47T0A†	3.5 - 4.0	48,200	98,640
HWCG48T0A	3.5 - 4.0	45,900	98,000
HWCG60T0A	5.0	47,800	102,200

*At high speed setting †Small-Chassis AH

See AHRI Directory for matches

Multi-position, freeze protection in both cooling and heating. Slide-out blower assembly, blower time delay and low voltage terminal strip. Non-corrosive drain pans.

HWCG**X0A Series

ECM constant torque blower motor.

HWCG**T0A Series

Reliable PSC blower motor.

All versions come with factory installed TXV.



115V-1-60

1-1/2 to 5 Tons

Hydronic Air Handlers

Model	Nom. Cooling Cap. Tons	Heating Cap. BTUH	CFM @ 0.20"
AHG24-0A	1.5 - 2.0	20,000-30,000	800
AHG30-0A	2.5	30,000-39,000	1000
AHG36-0A	3.0 - 3.5	41,000-50,000	1330
AHG48-0A	3.5 - 4.0	43,000-67,000	1740
AHG60-0A	5.0	62,000-80,000	2000

At high speed setting

See AHRI Directory for matches

Ideal replacement units are multi-position, with freeze protection in both cooling and heating. Slide-out blower assembly, blower time delay and low voltage terminal strip. Non-corrosive drain pans. TXV for R-410A built into unit. Reliable PSC blower motor.

115V-1-60

1-1/2 to 5 Tons



GAS FURNACES

97% Modulating Gas Furnace

Upflow/Horiz	Input BTUH
GUH97M070B3M	66,000
GUH97M090C3M	88,000
GUH97M090C4M	88,000
GUH97M090C5M	88,000
GUH97M110C5M	110,000
GUH97M130D5M	132,000

Because air is constantly being drawn across the filter, indoor air quality and humidity control are enhanced. Less on/off cycling also reduces wear on components.

ECM variable speed blower motor provides even temperatures and improved indoor air quality. Modulating gas valve and induce draft motor. All units A/C ready.

Upflow/horizontal models only.

120V-1-60

97.0% AFUE



95% Two Stage Gas Furnace



ECM variable speed blower motor provides even temperatures and improved indoor air quality. Two stage design operates at low speed most of the time to save energy, automatically ramps up to second stage when there's demand. All units A/C ready.

Upflow/horizontal models only.

120V-1-60 95.0% AFUE

Upflow/Horiz	1 st Stage Input	2 nd Stage Input	AFUE
GUH95T045B3M	29,000	44,000	95.0%
GUH95T070B3M	43,000	66,000	95.0%
GUH95T090C3M	57,000	88,000	95.0%
GUH95T090C5M	57,000	85,000	95.0%
GUH95T110C5M	72,000	110,000	95.0%
GUH95T135D5M	88,000	132,000	95.0%

Because air is constantly being drawn across the filter, indoor air quality and humidity control are enhanced. Less on/off cycling also reduces wear on components.

Beginning in late 2019/early 2020, the GUH95T 2-Stage 95% AFUE Series of furnaces will transition to the GUH96T 2-Stage 96% AFUE Series of Furnaces. These will be available as stock depletes of current GUH95T models.



ECM variable speed blower motor provides even temperatures and improved indoor air quality. Two stage design operates at low speed most of the time to save energy, automatically ramps up to second stage when there's demand. All units A/C ready.

Upflow/horizontal models only.

120V-1-60 96.0% AFUE

96% Two Stage Gas Furnace

Upflow/Horiz	1 st Stage Input	2 nd Stage Input
GUH96T045B3M	29,000	44,000
GUH96T070B3M	43,000	66,000
GUH96T090C3M	57,000	88,000
GUH96T090C5M	57,000	88,000
GUH96T110C5M	72,000	110,000
GUH96T135D5M	88,000	132,000

Comfort-Care®

95% Single Stage Gas Furnace

Upflow/Horiz	Input BTUH	Downflow	Input BTUH
GUH95C045B3M	44,000	GDD95C045B3M	44,000
GUH95C070B3M	66,000	GDD95C070B4M	66,000
GUH95C090C4M	88,000	GDD95C090C4M	88,000
GUH95C110C5M	110,000	GDD95C110C5M	110,000
GUH95C135D5M	132,000		

A = 14½" cabinet width
 B = 17½" cabinet width
 C = 21" cabinet width
 D = 24½" cabinet width
 Last digit = nom. tons cooling
 Upflow/Horiz = Upflow/Horizontal



120V-1-60
95.0% AFUE

Efficient and reliable heat exchangers, hot surface igniter, integrated furnace control with on-board diagnostics. Equipped with ECM constant torque motor. Low profile cabinet is ideal for replacements. All units are A/C ready.



120V-1-60
92.1% AFUE

92% Single Stage Gas Furnace

Upflow/Horiz	Input BTUH	Downflow	Input BTUH
GUH92C045B3M	44,000	GDD92C045B3M	44,000
GUH92C070B3M	66,000	GDD92C070B3M	66,000
GUH92C090C3M	88,000	GDD92C090C4M	88,000
GUH92C090C4M	88,000		
GUH92C110C4M	110,000		
GUH92C110C5M	110,000		

A = 14½" cabinet width
 B = 17½" cabinet width
 C = 21" cabinet width
 D = 24½" cabinet width
 Last digit = nom. tons cooling
 Upflow/Horiz = Upflow/Horizontal

Efficient and reliable heat exchangers, hot surface igniter, integrated furnace control with on-board diagnostics. Equipped with constant torque motor. Low profile cabinet is ideal for replacements. All units are A/C ready.



80% Single Stage Gas Furnace

Upflow/Horiz.	Input BTUH	Downflow	Input BTUH
GUH80C045A3M	44,000	GDD80C045A3M	44,000
GUH80C070A3M	66,000	GDD80C070B3M	66,000
GUH80C070B3M	66,000	GDD80C090B4M	88,000
GUH80C090B4M	88,000	GDD80C110C5M	110,000
GUH80C090C5M	88,000		
GUH80C110C5M	110,000		
GUH80C135D5M	132,000		

A = 14½" cabinet width
 B = 17½" cabinet width
 C = 21" cabinet width
 D = 24½" cabinet width
 Last digit = nom. tons cooling

80% AFUE **120V-1-60**



Our non-condensing gas furnace features hot surface igniter, in-shot burner and crimped no-weld aluminized clam shell heat exchanger. Multi-speed ECM blower delivers warm air quietly. Low profile cabinet fits in even tight spaces. Integrated control board includes diagnostic lights. LP conversion kits are available.

Oil Furnaces - PSC

Highboy	Output	AFUE	Lowboy	Output	AFUE
OUIB75-D3	57-72,000	84.0%	OLFB95-D4	85-95,000	83.0%
OUIB95-D4	84-95,000	83.0%	OLRB95-D4	85-95,000	83.0%
OUIB125-D5	113-126,000	83.0%	OLFB125-D5	113-127,000	83.0%
			OLRB125-D5	113-127,000	83.0%
Down/Horiz	Output	AFUE	<i>OLFB, OUIB and OUIB=front flue; OLRB and OLRB=rear flue Shipped with high fire nozzle installed; nozzle change adjusts firing rate.</i>		
ODFB95-D3	85-95,000	83.0%			
ODRB95-D3	85-95,000	83.0%			
ODFB125-D5	113-126,000	84.0%			



115V-1-60

Up to 84% AFUE

Highboy and lowboy models with Beckett AFG oil burner, new advanced burner control, multi-speed direct drive blower, and foil-faced insulation.

Oil Furnaces - ECM

Lowboy	Output	AFUE	Highboy	Output	AFUE
OLFB87-E4	67-87,000	85.0%	OUIB87-E4	67-87,000	85.0%
OLRB87-E4	67-87,000	85.0%	OUIB118-E5	104-118,000	85.0%
OLFB118-E5	104-118,000	85.0%			
OLRB118-E5	104-118,000	85.0%			
			Down/Horiz	Output	AFUE
			OUIB95-E3	85-97,000	83.0%
			OHRB95-E3	85-97,000	83.0%

OLFB, OUIB and OUIB=front flue; OLRB and OHRB=rear flue; Shipped with high fire nozzle installed; nozzle change adjusts firing rate.

Highboy and lowboy models with Beckett™ Flame Retention NX oil burner, a high efficiency ECM variable speed blower motor, and foil-faced insulation.



120V-1-60

Up to 85% AFUE

Industrial Oil Furnace 225,000 - 450,000 BTUH

Large capacity makes these ideal for churches, schools and commercial buildings. Can be installed either vertically or horizontally. Twin blowers are mounted on rails to be serviced from either side. Rated at 81% steady state efficiency.



Model	Firing Rate GPH	BTUH Output	Nozzle Size	Motor
LG14-225/275B40	2.0	225,000	2.0 70°B	1.5 HP
	2.5	275,000	2.5 60°B	
LG14-350/450B60	3.0	350,000	3.0 70°B	2.0 HP
	4.0	450,000	4.0 60°B	

Model	Oil Burner
LG14-225/275B40	A501-1
LG14-350/450B60	A502-1

Oil burners must be ordered separately.

230V-1-60

Comfort-Care®

Package Gas Heat/Electric Cooling - ECM

14 SEER

Model	Cooling BTUH	Heat Input BTUH	Model	Cooling BTUH	Heat Input BTUH
TGRG24541P	22,600	54,000	TGRG42721P	40,000	72,000
TGRG24721P	22,600	72,000	TGRG42901P	40,000	90,000
TGRG30541P	28,400	54,000	TGRG481081P	45,500	108,000
TGRG30721P	28,400	72,000	TGRG481261P	45,500	126,000
TGRG36721P	34,000	72,000	TGRG601081P	57,000	108,000
TGRG36901P	34,000	90,000	TGRG601261P	57,000	126,000



High efficiency coils optimize heat transfer; features one piece top for water management and scroll compressor for efficiency. Self-contained units require only ductwork and a thermostat. Convertible air delivery—horizontal or downflow. Can be rooftop- or slab-mounted.

Compact cabinet has full perimeter base rails and durable polyurethane finish. Mesh hail guard protects the coil.

208/230-1-60 80% AFUE



14 SEER

Features include compact footprint, durable cabinet with poly urethane finish, permanently lubricated PSC motor, mesh hail guard.

208/230-1-60 2 to 5 Tons

Residential Package Units - ECM

8.0 HSPF

Cooling Only Model	Cooling BTUH	Heat Pump Model	Cooling BTUH	Heating BTUH
TARG24001P	22,600	TPRG24001P	22,600	22,000
TARG30001P	28,400	TPRG30001P	28,600	27,000
TARG36001P	34,000	TPRG36001P	34,000	32,400
TARG42001P	40,000	TPRG42001P	40,000	39,000
TARG48001P	45,500	TPRG48001P	46,000	45,000
TARG60001P	57,000	TPRG60001P	57,000	56,000

Dedicated horizontal flow in cooling only or heat pump models. Ideal wherever a self-contained unit is needed. Mount on slab, or side discharge can be field modified for rooftop applications. Optional field-installed electric heater and other accessories are available.

Package Gas Heat/Electric Cooling - PSC

14 SEER

Model	Cooling BTUH	Heat Input BTUH	Model	Cooling BTUH	Heat Input BTUH
TGRG24541M	22,600	54,000	TGRG42721M	40,000	72,000
TGRG24721M	22,600	72,000	TGRG42901M	40,000	90,000
TGRG30541M	28,400	54,000	TGRG481081M	46,000	108,000
TGRG30721M	28,400	72,000	TGRG481261M	46,000	126,000
TGRG36721M	34,000	72,000	TGRG601081M	57,000	108,000
TGRG36901M	34,000	90,000	TGRG601261M	57,000	126,000



High efficiency coils optimize heat transfer; features one piece top for water management and scroll compressor for efficiency. Self-contained units require only ductwork and a thermostat. Convertible air delivery—horizontal or downflow. Can be rooftop- or slab-mounted.

Compact cabinet has full perimeter base rails and durable polyurethane finish. Mesh hail guard protects the coil.

*FER Compliant, Pre-July 2019 manufacture. Available through stock depletion.

208/230-1-60 80% AFUE



14 SEER

Features include compact footprint, durable cabinet with poly urethane finish, permanently lubricated PSC motor, mesh hail guard.

208/230-1-60

2 to 5 Tons

Residential Package Units - PSC

8.0 HSPF

Cooling Only Model	Cooling BTUH	Heat Pump Model	Cooling BTUH	Heating BTUH
TARG24001M	22,600	TPRG24001M	22,600	22,000
TARG36001M	34,000	TPRG30001M	28,600	27,000
TARG42001M	40,000	TPRG36001M	34,000	33,400
TARG48001M	46,000	TPRG42001M	40,000	39,000
TARG60001M	57,000	TPRG48001M	46,000	45,000
		TPRG60001M	57,000	56,000

Dedicated horizontal flow in cooling only or heat pump models. Ideal wherever a self-contained unit is needed. Mount on slab, or side discharge can be field modified for rooftop applications. Optional field-installed electric heater and other accessories are available.

*FER Compliant, Pre-July 2019 manufacture. Available through stock depletion.

MANUFACTURED HOUSING

DGAX 80% Gas Furnace - ECM Motor

Model	Input BTUH	Output BTUH	Dimensions H x D x W
DGAX056BDTD	56,000	45,000	76" x 19.5" x 24.5"
DGAX070BDTD	70,000	56,000	76" x 19.5" x 24.5"
DGAX077BDTD	77,000	62,000	76" x 19.5" x 24.5"
DGAX090BDTD	90,000	72,000	76" x 19.5" x 24.5"

For downflow applications only, this 80% AFUE Gas Furnace is built in the USA, and features an integral AC coil cabinet and 4-Ton capacity blower. The DGAX-Series' Hot Surface Ignition saves fuel and increases reliability, and the universal-size disposable air filters offer convenience for the homeowner.



CMH Series Manufactured Housing Coils



TXV for 1.5 - 2.5 Ton H4TXV01
TXV for 3 - 4 Ton H4TXV02

Coil Model	Nominal Tonnage	Dimensions		
		Pan Widths (W)"	Pan Depth (D)"	Coil Height (H)"
CMH18/36PM1M	1.5 - 3	18"	19-1/2"	17"
CMH24/30PM1M	2 - 2.5	18"	19-1/2"	19"
CMH36PM2M	2.5 - 3	18"	19-1/2"	19"
CMH42/48PM1M	3.5 - 4	18"	19-1/2"	19"
CMH42/48PM2M	3.5 - 4	18"	19-1/2"	19"
CMH48PM2M	3.5 - 4	18"	19-1/2"	21"
CMH18/24PM3M	1.5 - 2	18"	19-1/2"	11"
CMH36PM3M	3	18"	19-1/2"	15"
CMH42/60PM3M	3.5 - 5	18"	19-1/2"	19"

Rifled copper tubing, enhanced aluminum fins. Immersion-tested at 500 psi, then nitrogen-pressurized and sealed. Left-hand refrigerant and plumbing connections. Externally mounted flowrater body with Schrader valve. Heavy duty plastic drain pans on all models. AHRI certifiable with certain brands of A/C and heat pump systems. UL listed for use with both R-22 and R-410a when proper metering device is used.



EBE & EUE Electric Furnace - ECM Motor

Model	Input kW	BTUH @ 240V	Dimensions H x D x W
EBE10F/EUE10A	10	34,000	51.5" x 19.5" x 24"
EBE12F/EUE12A	12	39,000	51.5" x 19.5" x 24"
EBE15F/EUE15A	15	51,000	51.5" x 19.5" x 24"
EBE17F/EUE17A	17	56,000	51.5" x 19.5" x 24"
EBE20F/EUE20A	20	67,000	51.5" x 19.5" x 24"
EBE23F/EUE23A	23	77,000	51.5" x 19.5" x 24"

Made for years of reliability and installation-ease, the EBE/EUE-Series of Electric Furnaces are built in the USA, and feature an integral AC coil cabinet with a 4-Ton capacity blower. Sequenced heating prevents heating and allows staging with Heat Pumps, while the universal-size disposable air filters offer convenience for the homeowner. EBE-Series are dedicated for upflow applications, whereas the EUE-Series are dedicated for upflow applications.

MM9E 95% Gas Furnace - ECM Motor

Model	Input BTUH	Output BTUH	BLWR	Dimensions H x W x D
MM9E060B12MP11	60,000	57,000	3T	33" x 16-3/8" x 29-1/2"
MM9E080B12MP11	80,000	76,000	3T	33" x 16-3/8" x 29-1/2"
MM9E080C16MP11	80,000	78,000	4T	33" x 19-7/8" x 29-1/2"
MM9E080C20MP11	100,000	95,000	4T	33" x 19-7/8" x 29-1/2"
MM9E100C16MP11	100,000	95,000	5T	33" x 19-7/8" x 29-1/2"

With a compact 33" height, and conventional high-efficiency design, the MM9E-Series of 95% AFUE Gas Furnaces offer superior performance with flexible installation requirements. Built in the USA, this furnace comes as a factory-default downflow, but is convertible to upflow; and offers a powerful blower in a well-insulated cabinet for quiet comfort.



DUCTLESS MINI-SPLITS



Includes wireless remote

Ductless Mini-Splits Single Zone

16 SEER

Model	Specifications
SVH09SB-0	9,000 cool/9,800 heat BTU, 115V, EER 10.1
SVH09SB-1	9,000 cool/9,800 heat BTU, 208/230V, EER 8.8
SVH12SB-0	12,000 cool/12,000 heat BTU, 115V, EER 8.8
SVH12SB-1	12,000 cool/12,000 heat BTU, 208/230V, EER 8.8
SVH18SB-1	18,000 cool/18,000 heat BTU, 208/230V, EER 9.9
SVH24SB-1	24,000 cool/24,000 heat BTU, 208/230V, EER 8.9

Optional 115 or 230 volt available on 9K and 12K

Our SVH-Series, rated up to 16.8 SEER, offers economical zone control because only the room or area being used is conditioned. Also inverter technology matches the compressor speed to the room's changing temperature requirements.



Includes wireless remote

Ductless Mini-Splits Single Zone 19 SEER

Model	Specifications
DVH09SG-0	9,000 cool/9,000 heat; HP, EER 12, HSPF 10.0
DVH09SG-1	9,000 cool/9,000 heat; HP, EER 10.5, HSPF 9.5
DVH12SG-0	12,000 cool/12,000 heat; HP, EER 11.0, HSPF 9.5
DVH12SG-1	12,000 cool/12,000 heat; HP, EER 11.0, HSPF 9.5
DVH18SG-1	18,000 cool/18,000 heat, HP, EER 11.0 HSPF 10.0
DVH24SG-1	24,000 cool/25,000 heat, HP, EER 9.5, HSPF 9.5

Power Supply: 9K and 12K: 115V; 18K and 24K: 208/230V

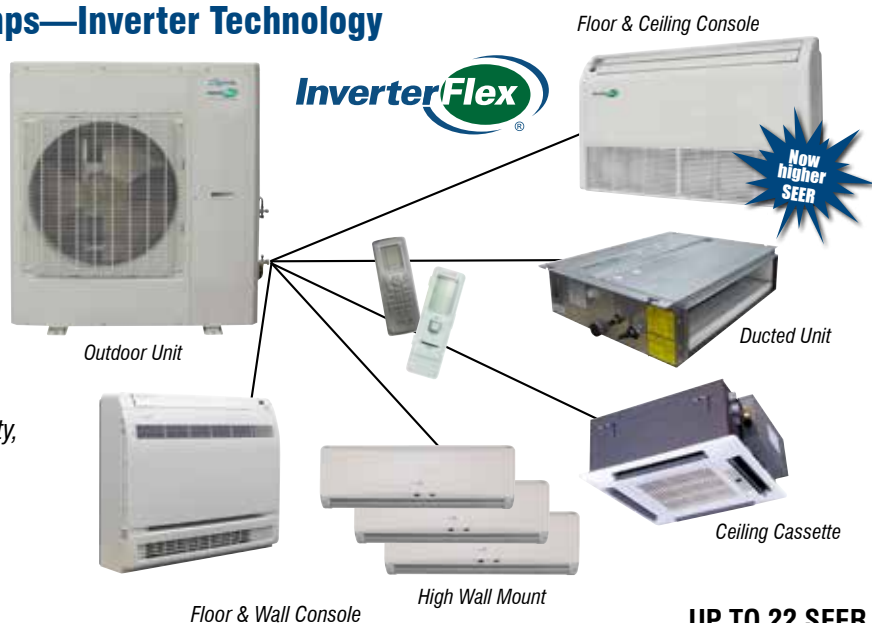
Efficient, economical comfort with cooling, heating, fan only, sleep and dehumidification modes. Built with 24-hour timer, superior filtration and auto temperature compensation.

Multi-Zone Mini-Split Heat Pumps—Inverter Technology

Cool and heat one to five separate rooms or areas, depending on the capacity of the outdoor unit. Each zone has an independently controlled air handler with remote; ceiling cassettes and ducted units also have a wired wall thermostat. Built with enhanced filtration, quiet operation, multiple modes, low ambient cooling and "Follow" function.

Mix 'n' match indoor units

May be sized up to 150% of outdoor unit capacity, but may not provide full capacity for all indoor units. Total capacity of all indoor units can be as low as 50% of the outdoor unit's capacity.



208/230-1-60

UP TO 22 SEER

Outdoor Unit	System Capacity BTUH	Cooling/Heating	Ducted Unit	Capacity BTUH per unit
A-VFH18DB-1	18,000 cool, 19,000 heat, HSPF 10.5		B-VFH09DA-1	8,500 cool, 9,500 heat, 265 max. CFM
A-VFH24TB-1	24,000 cool, 29,500 heat, HSPF 10.5		B-VFH12DA-1	11,900 cool, 13,100 heat, 324 max. CFM
A-VFH30QB-1	29,000 cool, 32,000 heat, HSPF 10.5		B-VFH18DA-1	15,300 cool, 18,700 heat, 412 max. CFM
A-VFH36QB-1	34,000 cool, 41,000 heat, HSPF 10.5		B-VFH21DA-1	20,400 cool, 22,600 heat, 588 max. CFM
A-VFH42PB-1	39,000 cool, 45,000 heat, HSPF 10.2		B-VFH24DA-1	22,800 cool, 27,400 heat, 588 max. CFM
High Wall Mount Indoor	Capacity BTUH per unit		Floor/Wall Console Indoor	Capacity BTUH per unit
B-VFH09MB-1	9,000 cool, 9,800 heat, 430 max. CFM		B-VFH09FA-1	9,000 cool, 9,500 heat, 383 max. CFM
B-VFH12MB-1	12,000 cool, 13,000 heat, 453 max. CFM		B-VFH12FA-1	12,000 cool, 13,000 heat, 441 max. CFM
B-VFH18MB-1	18,000 cool, 19,000 heat, 588 max. CFM		B-VFH18FA-1	18,000 cool, 19,000 heat, 494 max. CFM
B-VFH24MB-1	20,800 cool, 21,500 heat, 736 max. CFM			
Indoor Ceiling Cassette	Capacity BTUH per unit		Floor/Ceiling Indoor Unit	Capacity BTUH per unit
B-VFH12CA-1	12,000 cool, 13,000 heat, 353 max. CFM		B-VFH09UA-1	8,500 cool, 9,500 heat, 383 max. CFM
B-VFH18CB-1	14,400 cool, 16,000 heat, 353 max. CFM		B-VFH12UA-1	11,900 cool, 13,100 heat, 383 max. CFM
B-VFH24CA-1	22,800 cool, 27,400 heat, 694 max. CFM		B-VFH18UA-1	17,000 cool, 18,700 heat, 559 max. CFM
Front Panels	C-VFH1218CB—12K & 18K; C-VFH24CA—24K		B-VFH24UA-1	22,800 cool, 27,400 heat, 736 max. CFM

UltraV Series Heat Pump Inverter Single Zone

Super efficient heat pumps are rated up to 25 SEER and operate down to -22°F. 100% capacity at 0°F. Inverter technology saves up to 40% in energy consumption.



A- (outdoor)
B- (indoor)

Includes wireless remote

208/230-1-60

UP TO 25 SEER

Outdoor Model	Specifications
A-VMH09SU-1	9,000 cool, 10,900 heat, 418 max. CFM
A-VMH12SU-1	12,000 cool, 11,800 heat, 418 max. CFM
A-VMH18SU-1B	17,000 cool, 18,000 heat, 512 max. CFM
A-VMH24SU-1	24,000 cool, 24,000 heat, 794 max. CFM
Indoor Model	Specifications
B-VMH09SU-1*†	9,000 cool, 10,900 heat, 418 max. CFM
B-VMH09SU-1C**	9,000 cool, 10,900 heat, 418 max. CFM
B-VMH12SU-1*†	12,000 cool, 11,800 heat, 418 max. CFM
B-VMH12SU-1C**	12,000 cool, 11,800 heat, 418 max. CFM
B-VMH18SU-1B*†	17,000 cool, 18,000 heat, 512 max. CFM
B-VMH24SU-1*†	24,000 cool, 24,000 heat, 794 max. CFM

VMH single and multi are interchangeable

**Optional programmable wired controller

† Optional smartphone control

VMH UltraV—Single/Multi Zone Ductless Mini-Splits

Our new UltraV Series features a wide operating range with higher capacities in low temperatures. This allows the unit to operate in the heating mode with 100% output even when the outdoor temperature is as low as 0°F. Advanced inverter technology means the room will reach the preset temperature quickly.

Energy usage is kept to a minimum as units run at low frequency most of the time. However, when required the unit ramps up automatically to reach and maintain the comfort level.

With this broad ambient range, these units are well suited to installations requiring year-round conditioning, both residential and light commercial.

All operate down to -22°F.

100% capacity: Multi at 5°F, Single at 0°F.



Floor & Ceiling Console

Optional programmable wired controller

Ducted Unit

Includes a programmable wired controller

Ceiling Cassette

Optional programmable wired controller

High Wall Mount

Optional wired controller

Floor Console

Optional wired controller

208/230-1-60

UP TO 25 SEER

Indoor Ceiling Cassette	Capacity BTUH per unit	Floor Mount Indoor Unit	Capacity BTUH per unit
B-VMH09CU-1*	9,000 cool, 9,000 heat, 600 max. CFM	B-VMH12FU-1*	12,000 cool, 12,000 heat, 365 max. CFM
B-VMH12CU-1*	12,000 cool, 12,000 heat, 574 max. CFM	Ducted Unit	Capacity BTUH per unit
B-VMH18CU-1*	18,000 cool, 18,000 heat, 956 max. CFM	B-VMH09DU-1	9,000 cool, 9,000 heat, 353 max. CFM
B-VMH24CU-1*	24,000 cool, 24,000 heat, 1,400 max. CFM	B-VMH12DU-1	12,000 cool, 12,000 heat, 353 max. CFM
Cover Panel for Indoor Ceiling Cassette	Dimensions/Weight	B-VMH18DU-1	18,000 cool, 18,000 heat, 530 max. CFM
C-VMH91218CU-1*	25.47" x 25.47" x 1.97", 5.51 net, 9.92 ship	B-VMH24DU-1	24,000 cool, 24,000 heat, 776 max. CFM
C-VMH24CU-1*	37.4" x 37.4" x 2.17", 11.02 net, 17.64 ship	Outdoor Unit	Capacity BTUH per unit
Floor/Ceiling Mount Indoor	Capacity BTUH per unit	A-VMH18DU-1	19,000 cool, 20,000 heat, 2,130 CFM
B-VMH18UU-1*	18,000 cool, 18,000 heat, 666 max. CFM	A-VMH28TU-1	28,000 cool, 28,000 heat, 2,130 CFM
B-VMH24UU-1*	24,000 cool, 24,000 heat, 880 max. CFM	A-VMH36QU-1	36,000 cool, 35,800 heat, 4,500 CFM
		A-VMH48PU-1	48,000 cool, 37,800 heat, 4,500 CFM

Outdoor units—Energy Star® compliant when combined with indoor units having an () by model number in above table

Ductless Mini-Split Heat Pumps Up to 16.0 SEER

Model	Specifications
VMH30SD-1	30,000 cool/30,000 heat BTU, 19.8 SEER, 208/230V
VMH36SD-1	36,000 cool/36,000 heat BTU, 16.0 SEER, 208/230V

Large capacity models are designed to condition spaces up to 1550 square feet. Super efficient heat pump mini-splits with variable speed compressors save up to 40% in energy consumption over standard models.

Ambient Operating Temperature:

5° - 122°F Cooling

5° - 86°F Heating



Optional wired thermostat
Part No. 7800-206

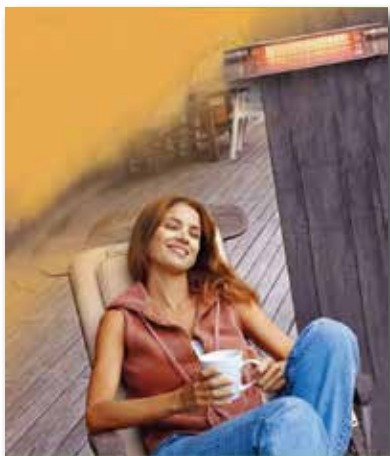
Includes wireless remote



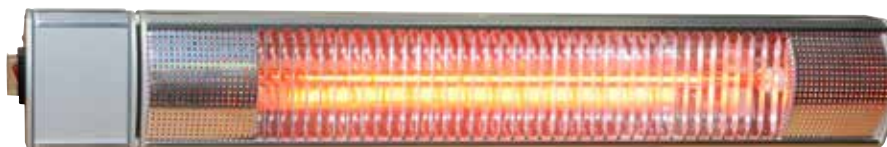
Ceiling
& Floor
Console

INFRARED HEATERS

Infrared Outdoor Heaters—3000W, 6000W



Heaters can be mounted on the wall or ceiling, mounting brackets are included with heater.



Features	IR30S—2 Emitters	IR60S—3 Emitters
Power	208/240-1-60	208/240-1-60
Power Supply	Hard wired	Hard wired
Watts / Amps	3000W / 12.5A	6000W / 25A
Heating Area	10' x 12'	12' x 14'
Mounting Height	8 1/2' to 10'	10' to 15'
Power Cable	6' per emitter	6' per emitter
Height x Depth	3.81" x 4.81"	3.81" x 4.81"

Add comfort on cool days—ideal for patio, balcony, terrace, porch or other outdoor space. Constructed of durable anodized aircraft aluminum and IP65 rated for use in wet environments.

Free-Standing Infrared Outdoor Heater—1500W

Model IRPH15SS. Features	
Material	Stainless steel, anodized 6061 aircraft aluminum
Watts/Amps	1500W / 12.5A
Power	120V AC (grounded outlet)
Power Cord	15 feet long
Dimensions	Heater section: 20" W x 24" D
	Base: 18" in diameter
	Assembled height: 82"

IP65 rated for wet environments, use in all seasons.

Advanced medium wave infrared technology warms people and objects within a 64 square foot area, without heating the air. Radiated heat is unaffected by wind for efficient operation. Ideal for deck, patio or other outdoor area, heater plugs into a standard 120V outlet. Lamp is mounted on a strong mast with a heavy duty base for stability. Safety features include tip-over protection.



ROOM AIR PRODUCTS

Air Conditioners 5,000 to 28,000 BTUH

Model	Nom. Cooling BTU	Refrigerant	Remote	Power
RG-51Q	5,000	R-410A	No	115V
RADS-51Q	5,000	R-32	Yes	115V
RADS-61Q	6,000	R-32	Yes	115V
RADS-81Q	8,000	R-32	Yes	115V
RADS-101Q	10,000	R-32	Yes	115V
RADS-121Q	12,000	R-32	Yes	115V
RADS-151Q	15,100	R-32	Yes	115V
RADS-183P	17,700/18,000	R-410A	Yes	208/230V
RADS-253P	24,700/25,000	R-410A	Yes	208/230V
RAD-283M	28,000/28,000	R-410A	Yes	208/230V



R Series - Smartphone Compatible

Model	Nom. Cooling BTU	Refrigerant	Remote	Power
RADS-61R	6,000	R-32	Yes	115V
RADS-81R	8,000	R-32	Yes	115V
RADS-101R	10,000	R-32	Yes	115V
RADS-121 R	12,000	R-32	Yes	115V
RADS-151R	15,100	R-32	Yes	115V
RADS-183R	17,700/18,000	R-410A	Yes	208/230V
RADS-253R	24,700/25,000	R-410A	Yes	208/230V
RAD-283R	28,000/28,000	R-410A	Yes	208/230V

All units come with a window mounting system. Galvanized steel, painted cabinets are lightweight and finished in attractive neutral color. All have electronic controls and wireless remote, timer, energy saver mode and are energy star except RG-51 and RAD-283. Slide-out filter is washable.

Appearance may vary slightly from images shown.

ENERGY STAR® CERTIFIED MODELS:
See www.energystar.gov/productfinder/ for a complete listing of Comfort-Aire Energy Star certified room air conditioners.



For supplemental electric heat only

Air Conditioning with Electric Heat

Features 3-speed fan, 24-hour on/off timer, auto restart, and energy saver mode. One degree temperature adjustment and four way air direction. Includes full feature remote control.

Model	Cooling BTUH	Heating BTUH	Refrigerant	Power
REG-81M	8,000	3,500	R-410A	115V
REG-123M	11,600/12,000	8,500/11,000	R-410A	208/230V
REG-183M*	18,200/18,500	13,000/16,000	R-410A	208/230V
REG-253M*	24,700/25,000	13,000/16,000	R-410A	208/230V

*30A maximum fuse/circuit breaker size



For supplemental heat. Includes window mounting kit and support brackets.

Room Air Heat Pumps

Perfect for any room needing heating and cooling. Units change over to supplemental electric heat automatically at 40°F outside temperature. Features electronic controls and wireless remote.

Model	Cooling BTUH	HP Heat BTUH	Refrigerant	Air Delivery
RAH-123M	11,200/11,600	9,900/10,200	R-410A	265 CFM
RAH-183M	17,000/17,300	14,000/14,300	R-410A	541 CFM



208/230V-1-60



ENERGY STAR CERTIFIED MODELS:
See www.energystar.gov/productfinder/ for a complete listing of Comfort-Aire Energy Star certified room air conditioners.

Thru-the-Wall Series

Sized to fit standard wall sleeve, includes interior trim kit. Four way air deflection and multiple fan speeds for comfort, plus 24-hour on-off timer and energy saver mode. Also auto operation and sleep modes. All models feature electronic controls and wireless remote.

Model	Cooling BTUH	Heating BTUH	Refrigerant	Power
BG-81P	8,000	—	R-410A	115V
BG-101P	10,000	—	R-410A	115V
BG-103P	9,800/10,000	—	R-410A	208/230V
BG-121P	12,000	—	R-410A	115V
BG-123P	11,700/12,000	—	R-410A	208/230V
BG-143M	13,600/14,000	—	R-410A	208/230V
BGE-103M	9,800/10,000	8,600/10,600	R-410A	208/230V
BGE-123M	11,700/12,000	8,600/10,600	R-410A	208/230V
BGE-143M	13,600/14,000	8,600/10,600	R-410A	208/230V



Casement/Slider Air Conditioner

Model	Cooling BTUH	Refrigerant	Air Delivery	Power
CD-81Q	8,000	R-410A	264 CFM	115V
CD-101Q	10,000	R-410A	323 CFM	115V

For windows 20-5/16" to 39-7/16" high and starting at 15-1/2" wide.
Includes adjustable window mounting kit.

Solves the problem of mounting a window A/C unit in a horizontal sliding or casement window. Features three fan speeds, easy-access filter, adjustable air deflection, and wireless remote. With energy saver mode, 24-hour on/off timer.



Portable A/C

Ideal for any room where temporary cooling is needed (and heat with PSH-141D). Heavy duty casters and built-in handles make it easy to move unit. Built-in condensate management, electronic controls, 24 hour timer, and auto louver swing for gentle, breeze-like effect. Includes sliding adapters for windows.

PS-12D & PSH141D - Smartphone Compatible

115V-1-60

Model	Cooling BTUH	Design Type	Refrigerant	EER
PS-81D	8,000	Single Hose	R-410A	8.9
PS-101D	10,000	Single Hose	R-410A	9.0
PS-121D	12,000	Single Hose	R-410A	8.9
Heat/Cool	Cooling BTUH	Design Type	Refrigerant	Heat BTUH
PSH-141D	14,000	Single Hose	R-410A	11,000

PSH Model EER: 8.9, COP 2.6 Hose on all models is 60" long.



Package Terminal Units

Cooling Models	Nom. Cooling BTUH	Heat Pumps	Nom. Cooling BTUH	Heating Capacity BTUH
PTAC07A130B	7,200	PTHP07A130B	7,200	6,400
PTAC09A130B	9,500	PTHP09A130B	9,500	8,500
PTAC12A130B*	12,000	PTHP12A130B*	12,000	11,000
PTAC12A150B*	12,000	PTHP12A150B*	12,000	11,000
PTAC15A130B*	14,500	PTHP15A130B*	14,500	13,600
PTAC15A150B*	14,500	PTHP15A150B*	14,500	13,600

Electric heat standard: 7,000 and 9,000 BTUH models have 3kW electric heat; 12,000 & 15,000 BTUH models come with 3kW or 5kW heat

*Available in Seacoast

12,000 and 15,000 BTUH models now available with corrosion resistant seacoast coating on components.

To order, add "SC" to part number.

16



Includes electronic digital controls and temperature limiting for guest comfort and efficiency. All models include electric heat as standard. With built-in condensate management system and freeze protection.

Also available in 265V model

208/230V-1-60

26" PTAC

Model	Cooling BTUH	Elec. Heat kW	Heating BTUH	EER	Amps	Ship Wt.
PTTC09A-1	9,100/9,300	N/A	N/A	9.8/9.8	15A	84
PTTC12A-1	11,800/12,000	N/A	N/A	9.8/9.8	15A	92
PTTE09A-1	9,100/9,300	2.9/3.5	N/A	9.8/9.8	20A	86
PTTE12A-1	11,800/12,000	2.9/3.5	N/A	9.8/9.8	20A	94
PTTH09A-1	9,100/9,300	2.9/3.5	8,600/8,800	9.7/9.7	20A	96
PTTH12B-1	11,500/11,700	2.9/3.5	11,200/11,400	9.6/9.6	20A	99

Note : Beginning mid to late summer the current PTTxxxA-1 series will transition to the next series (PTTxxxB-1). The new models will be available as stock depletes of current models.

Our 26" PTAC air conditioners and heat pumps provide year-round comfort – room by room – for hotels, motels, apartments, office buildings, schools, nursing homes and more. Designed for quick installation in most 16" x 26" wall sleeves, they're great for new construction as well as replacements, especially where a standard 42" PTAC may be too large.

Combining attractive appearance with state-of-the-art technology, these units minimize energy usage while ensuring guest comfort. Available in cooling only, electric heat and heat pump versions.

208/230-1-6

9,000 to 12,000 BTUH

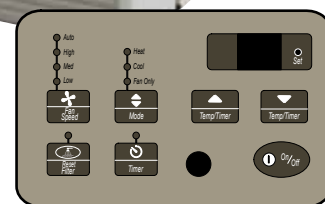
Features

Energy-Efficient—High energy efficiency ratios (EERs) save on utility costs; owner-programmed setback allowed for periods of inactivity and in-room temperature limitations.

Quiet Operation—Indoor sound reduction is achieved through the unit's two permanently lubricated fan motors; compressor has rubber grommet mounting.

Fresh Air Control Plate—Allows outdoor air into room through filtered vent, 23 CFM.

Easy to Service—The one-piece filter design provides enhanced air filtration. Conveniently located on the front of the unit, filters can be easily removed for cleaning.



LED display and touchpad buttons are simple to understand and easy to use.



30, 50, 70 pint models
Energy Star® certified

Easy to use with top mounted controls. Unit automatically shuts off when bucket is full. BHPD models have built-in pump for fast direct draining. Features auto defrost and auto restart. Slide-out filter is easily removed for washing and reusing. Low temperature operation to 41°F.

115V-1-60

Portable Dehumidifiers

Model	Capacity per Day	DOE* Rating	Bucket Capacity	Shipping Weight
BHD-301-J	30 pints	22 pints	6.3 pints	34 lbs.
BHD-501-J	50 pints	35 pints	12.7 pints	34 lbs.
BHD-701-J	70 pints	50 pints	12.7 pints	42 lbs.
BHDP-701-J	70 pints	50 pints	12.7 pints	43 lbs.

Condensate bucket is accessed from the front, has handy handholds on each side and an interior handle; unit can be adapted to direct drain. BHPD units with built-in pump can be used for direct drain or bucket can be used to collect condensate.

*DOE Standard for dehumidifiers: DOE recently released a new rating standard to show performance in colder environments, such as basements. At these reduced temperatures, it is harder to remove moisture from the air, resulting in lower performance. It is because of this we provide the standard rating and reduced DOE rating to better inform you of expected performance.



GEOTHERMAL/WATER SOURCE EQUIPMENT

GeoLogix™ HZ Series with Two-Way Communicating Controls

Model	Capacity Modulation	Specs for Groundwater Installation	EER/COP
HZV/HZD/ HZH024	Full Part	BTUH: 28,500 cooling/25,800 heating BTUH: 22,000 cooling/19,000 heating	26.4/5.3 34.1/5.8
HZV/HZD/ HZH036	Full Part	BTUH: 42,100 cooling/37,900 heating BTUH: 30,700 cooling/27,300 heating	26.1/5.2 34.4/5.5
HZV/HZD/ HZH048	Full Part	BTUH: 55,000 cooling/46,800 heating BTUH: 41,800 cooling/34,800 heating	25.3/4.6 32.9/5.0
HZV/HZD/ HZH060	Full Part	BTUH: 71,500 cooling/63,200 heating BTUH: 53,100 cooling/44,000 heating	24.4/4.8 32.4/5.0
HZV/HZD/ HZH070	Full Part	BTUH: 77,700 cooling/71,400 heating BTUH: 60,800 cooling/53,200 heating	22.5/4.4 28.6/4.5

HZV upflow—shown right; also HZD downflow and HZH horizontal available.

BTUH Ratings: Cooling at 59°F entering water temp; heating at 50°F entering water temperature.

DMX2 digital controller uses information from sensors to customize the operation for optimal efficiency. Operational data is displayed in plain English on communicating thermostat or optional diagnostic tool. HZ models work for open loop, closed loop residential applications.

Features two stage compressor, variable speed flow technology, ECM blower motor.



208/230-1-60
2 to 6 Tons

GeoLogix™ Plus Two Stage Geothermal Heat Pump (Split)

Model	Capacity Modulation	Specs for Groundwater Installation	EER/COP
HZS024	Full Part	BTUH: 25,600 cooling/24,000 heating BTUH: 20,400 cooling/18,700 heating	22.4/4.5 27.8/4.8
HZS036	Full Part	BTUH: 40,500 cooling/32,700 heating BTUH: 28,800 cooling/23,700 heating	23.4/4.5 29.7/4.8
HZS048	Full Part	BTUH: 52,800 cooling/45,900 heating BTUH: 40,700 cooling/34,300 heating	23.0/4.2 29.4/4.6
HZS060	Full Part	BTUH: 62,400 cooling/56,600 heating BTUH: 48,100 cooling/41,700 heating	20.3/4.0 26.0/4.3

BTUH Ratings: Cooling at 59°F entering water temperature; heating at 50°F entering water temperature. Ratings above with WDG air handler matches; ratings vary with MWG coils.

Exceptional efficiency with full/part load shifting and two-stage scroll compressor. Features micro-processor controls, quiet operation and performance monitoring system.

Cabinets can be stacked for multi-unit installations.



208/230-1-60
2 to 5 Tons

Comfort-Cire®

Match with MWG multi-position coils or DG air handlers.

Model	Capacity Modulation	Specs for Groundwater Installation	EER/COP
HEV/HEH 024	Full Part	BTUH: 26,500 cooling/23,000 heating BTUH: 20,300 cooling/16,700 heating	21.7/4.1 27.2/4.4
HEV/HEH 030	Full Part	BTUH: 32,300 cooling/30,000 heating BTUH: 24,900 cooling/22,000 heating	20.7/4.2 24.8/4.3
HEV/HEH 036	Full Part	BTUH: 38,200 cooling/35,100 heating BTUH: 29,000 cooling/24,900 heating	22.3/4.3 29.4/4.6
HEV/HEH 042	Full Part	BTUH: 46,300 cooling/42,300 heating BTUH: 35,200 cooling/30,500 heating	21.3/4.1 26.4/4.3
HEV/HEH 048	Full Part	BTUH: 51,800 cooling/45,000 heating BTUH: 39,200 cooling/32,600 heating	20.9/4.4 26.8/4.6
HEV/HEH 060	Full Part	BTUH: 68,000 cooling/55,400 heating BTUH: 50,400 cooling/39,800 heating	22.7/4.3 28.9/4.5

BTUH Ratings: Cooling at 59°F entering water temperature; heating at 50°F entering water temperature.

GeoLogix™ HEV Series Heat Pump

Efficient, compact two stage heat pump with ECM blower motor, integrated digital communication controls, and scroll compressor. Large filter improves indoor air quality.

Available in vertical or horizontal cabinet.

208/230-1-60



WDG Series Air Handlers for Geo Split Systems



BTUH Ratings: cooling at 59°F entering water temperature; heating at 50°F entering water temperature.

Electric heater kits available in 240V/208V, 2.9 to 14.4kW. Heater mounts internally in units; control board activates elements via internally wired low voltage harness.

Model	Cabinet Size (in.)	AHRI Match Split HP	Capacity Modulation	Groundwater BTUH Cooling /EER	Heating/COP
WDG24VSA	18½ x 44	HZS024	Full	27,800/24.9	24,100/4.60
WDG24VSB	22½ x 55	HZS024	Part	21,700/31.3	18,000/5.00
WDG36VSB	22½ x 55	HZS036	Full	41,900/25.0	34,300/4.70
WDG36VSC	25½ x 59	HZS036	Part	30,100/32.3	24,800/5.00
WDG48VSB	22½ x 55	HZS048	Full	52,700/23.7	46,600/4.60
WDG48VSC	25½ x 59	HZS048	Part	40,000/29.4	34,600/5.00
WDG60VSC	25½ x 59	HZS060	Full	63,000/21.9	57,900/4.20
			Part	47,600/27.1	43,000/4.60

Can be installed for vertical upflow or downflow, and horizontal left or right airflow without switching any components. ECM blower motor delivers quiet operation with maximum efficiency. Fully insulated cabinet with factory installed A-coil; R-410A TXV and all aluminum evaporator coil.

MWG Series Coils for Geo Split Systems



Cased coils are ideal for dual fuel add-on applications. Fully insulated cabinets come with dual right and left hand condensate drain connections. Fully insulated cabinet includes corrosion-proof drain pan, and all aluminum evaporator coil. Equipped with TXV. AHRI certified when matched with HZS split units.

Model	Approx. Air Flow CFM	Coil Dimensions (in.)		
		Width	Depth	Height
MWG24TB	600/800	17½	17⅞	20
MWG24TC	600/800	21½	17½	20
MWG36TC	825/1175	21	17½	20
MWG36TD	825/1175	24½	30¼	32
MWG48TC	1000/1600	21	25⅞	28
MWG48TD	1000/1600	24½	30¼	32
MWG60TD	1050/1700	24½	30¼	32

Coils fit a variety of furnace models with widths of 17½", 21", and 24½".

Water-to-Water Geothermal Systems

Comfort-Cire®

Model	Ground Water Installation (Open Loop)	EER/COP
HNW036A	BTUH: 36,200 cooling/35,300 heating	23.1/4.0
HNW060A	BTUH: 56,600 cooling/60,300 heating	20.3/4.0
HNW120A	BTUH: 113,200 cooling/120,600 heating	20.1/3.9
Model	Ground Loop Installation (Closed Loop)	EER/COP
HEW036A	BTUH: 30,400 cooling/26,900 heating	16.5/3.1
HEW060A	BTUH: 56,700 cooling/47,100 heating	17.3/3.1
HEW120A	BTUH: 113,400 cooling/94,200 heating	17.3/3.1
Model	208/230V-3-60 (Open or Closed Loop)	EER/COP
HWW036A	BTUH: 32,300 cooling/43,100 heating	14.6/4.9
HWW060B	BTUH: 52,800 cooling/72,700 heating	14.3/4.7
HWW120B	BTUH: 105,600 cooling/145,400 heating	14.1/4.6

BTUH Ratings: Cooling at 86°F entering water temperature; heating at 68°F entering water temperature.



For a wide range of residential and industrial applications including radiant floors, ice melting, potable hot water, etc. Units are available for ground water, ground loop and water loop applications. Features include microprocessor controls, scroll compressor, performance monitoring system, and insulated refrigerant circuit. Models available with or without hot water generator.

Compact units are both energy and space efficient. Ideal for replacements. For boiler/cooling tower applications; multiple units are connected by a water loop with independent control of each zone. Each unit can be operated year-round in heating or cooling mode. Features performance monitoring system and quiet operation.

Horizontal units come with factory-installed hanger brackets and field-convertible discharge. Some models with water side economizers.



All units available in right or left return.

Commercial Water-Source Heat Pumps

Model	Specs for Water Loop Installation	EER/COP
HBH/HBV006	BTUH: 5,800 cooling/7,500 heating	13.2/4.7
HBH/HBV009	BTUH: 8,800 cooling/11,600 heating	13.4/4.2
HBH/HBV012	BTUH: 11,700 cooling/15,200 heating	13.5/4.3
HBH/HBV015	BTUH: 14,500 cooling/17,300 heating	15.4/5.0
HBH/HBV018	BTUH: 17,300 cooling/21,500 heating	14.3/5.0
HBH/HBV024	BTUH: 23,700 cooling/28,500 heating	13.4/4.7
HBH/HBV030	BTUH: 28,100 cooling/35,100 heating	13.4/4.6
HBH/HBV036	BTUH: 34,500 cooling/45,200 heating	13.5/4.4
HBH/HBV042	BTUH: 40,100 cooling/52,700 heating	13.1/4.3
HBH/HBV048	BTUH: 47,700 cooling/55,900 heating	13.3/4.7
HBH/HBV060	BTUH: 59,400 cooling/77,000 heating	13.4/4.3

Water Loop installation: Cooling at 86°F entering water temperature, heating at 68°F entering water temperature.

208/230V-1, 208/230V-3, 460V, 575V, 265V offered, but all voltages are not available in all models.

Most models 015-060 available with ECM

Large Capacity Commercial Water-Source Heat Pumps

6 to 25 Tons



*Ideal for large spaces such as gyms, cafeterias, commons areas. Units feature microprocessor controls, performance monitoring system and dual refrigerant circuits. Available in front or back return, and a variety of discharge locations and voltages. Cabinets are fully insulated and scroll compressors have special double isolation mounting system for quiet operation. **HB Large** capacity models available in horizontal and vertical configurations.*

Horizontal Models	Specs for Water Loop Installation	EER/COP
HBH072A	BTUH: 69,000 cooling/92,500 heating	13.3/5.0
HBH096A	BTUH: 95,000 cooling/123,000 heating	13.7/5.0
HBH120A	BTUH: 119,000 cooling/160,000 heating	13.3/4.6
Vertical Models		
HBV072A	BTUH: 69,000 cooling/92,500 heating	13.3/5.0
HBV096A	BTUH: 95,000 cooling/123,000 heating	13.7/5.0
HBV120A	BTUH: 119,000 cooling/160,000 heating	13.3/4.6
HBV160A	BTUH: 157,000 cooling/207,000 heating	14.2/4.9
HBV192A	BTUH: 191,500 cooling/243,000 heating	14.3/5.1
HBV240A	BTUH: 233,000 cooling/318,000 heating	13.9/5.0
HBV300A	BTUH: 300,000 cooling/395,000 heating	13.5/4.8

Specifications for HKV and HBH Large Capacity: Water Loop installation: Cooling at 86°F entering water temperature, heating at 68°F entering water temperature.

208/230V-3-60, 460V-3-60, 575V-3-60 available

Large Capacity Commercial Water-Source Heat Pumps

Model	Specs for Water Loop Installation	EER/COP
HKV084A	BTUH: 82,000 cooling/101,000 heating	15.2/4.8
HKV096A	BTUH: 94,000 cooling/118,000 heating	15.0/4.7
HKV120A	BTUH: 118,000 cooling/144,000 heating	15.0/5.0
HKV150A	BTUH: 150,000 cooling/186,000 heating	14.0/4.7
HKV168A	BTUH: 166,000 cooling/204,000 heating	15.5/4.9
HKV192A	BTUH: 190,000 cooling/238,360 heating	15.3/4.8
HKV240A	BTUH: 238,500 cooling/291,000 heating	15.3/5.1
HKV300A	BTUH: 300,000 cooling/372,000 heating	14.0/4.7

Specifications for HKV Large Capacity–Water Loop installation: Cooling at 86°F entering water temperature, heating at 68°F entering water temperature.

208/230V-3-60, 460V-3-60, 575V-3-60 available.

Ideal for large spaces such as gyms, cafeterias, commons areas. Units feature microprocessor controls, performance monitoring system and dual refrigerant circuits (-168 through -300 models). Multiple access panels simplify installation. Cabinets are fully insulated and compressors have special double isolation mounting system for quiet operation.



HRC Series Water-Source Console

A ductless solution where space is limited or structural integrity is required. Compact console is efficient and reliable, with microprocessor controls, performance monitoring system, and polyester powder coat finish on galvanized steel cabinet. With extended operating range, units are capable of ground loop as well as water loop (boiler-tower) installations. Installation options include right- or left-hand piping, front or bottom return air.

Model	Specs for Water Loop Installation	EER/COP
HRC09A	BTUH: 8,600 cooling/11,400 heating	13.3/4.6
HRC12A	BTUH: 11,300 cooling/14,100 heating	12.8/4.5
HRC15C	BTUH: 13,700 cooling/17,500 heating	12.8/5.1
HRC18C	BTUH: 15,600 cooling/20,100 heating	12.2/4.5

Specifications for HRC Console: Water Loop installation: Cooling at 86°F WB entering air temperature, heating at 59°F entering air temperature.

Available voltages: 208/230-1-60, 115-1-60, 265-1-60.





Comfort-Aire® has been delivering confidence for over three-quarters of a century.

There's the confidence that comes from dealing with a company that's been around for generations. Founded in 1933, we can actually trace our beginnings to the Wingert Furnace Company which began building coal, gas and oil furnaces in 1907. Headquartered in Jackson, Michigan, since 1955, our facility, our staff and our product offerings have grown over the years to meet changes in the HVAC industry, including emerging technologies and regulatory requirements.

You can be confident about finding the heating and cooling products you need at Comfort-Aire®. Our line runs the gamut from 5,000 BTUH room air conditioners to 25 ton commercial units. We're your source for a wide range of equipment that meets a variety of applications...plus most needed accessories and service parts.

You can be confident that we'll make it easy for you to do business with us. We don't require minimum order quantities, and we ship freight pre-paid on orders of \$10,000 or more. Twice a year we offer stocking programs with great discounts and dating terms. We also deliver confidence with in-season availability. That means if, in the heat of summer, you run out of condensers or mini-splits or whatever, there's a good chance we'll have what you need in our warehouse and, in many instances, we'll be able to ship next day. All of which makes it easy for you to control your inventory while meeting your customers' needs.

Perhaps most important, you can be confident that we'll stand behind our products with outstanding warranties and after-sale support. Experienced technicians can help diagnose and solve installation and service issues over the phone, and they're backed up by knowledgeable sales representatives throughout the country. Our web site is another resource with owners' manuals, technical documentation, warranty claim submittal available at any time.

The entire Comfort-Aire® team is dedicated to delivering confidence by exceeding the expectations of our distributors, our dealers and the consumers who buy our products.



"This product complies with all California product labeling laws including, but not limited to, the Safe Drinking Water and Toxic Enforcement Act of 1986, more commonly known as Proposition 65."

Due to ongoing product improvements, specifications and dimensions are subject to change and correction without notice or incurring obligations. Determining the application and suitability for use of any product is the responsibility of the installer. Additionally, the installer is responsible for verifying dimensional data on the actual product prior to beginning any installation preparations.

Third party incentive and rebate programs have precise requirements as to product performance and certification. All products meet applicable regulations in effect on date of manufacture; however, certifications are not necessarily granted for the life of a product. Therefore, it is the responsibility of the applicant to determine whether a specific model qualifies for these incentive/rebate programs.